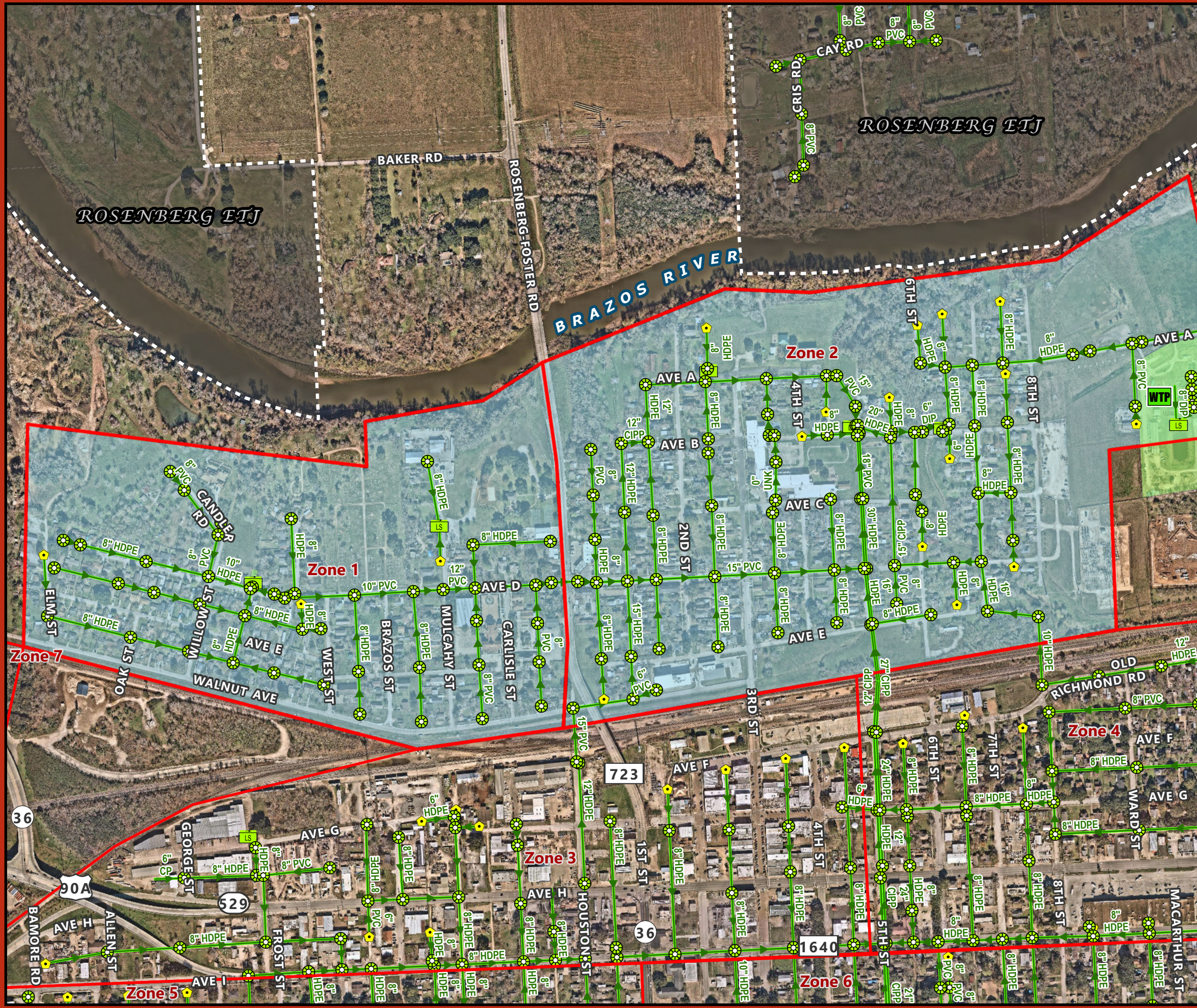


UTILITIES:

Sanitary Sewer Collection System Maintenance and Assessment Program Zones 1 & 2

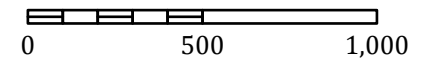
City of Rosenberg, Texas



- Sanitary Manhole
- Cleanout - Main
- Sewer Gravity Mains
- Smoke Zones



Scale:
1:6,600
or
1 in = 550 ft
Feet



**Note: not all minor features, such as service lines, may be shown. Major features such as mains should be completely shown. Please report any errors in map to the City GIS staff.*

Created by: City of Rosenberg GIS - Cory Vardaman
Date Created: January 02, 2025
Original Size: 11" x 17"

This product is for informational purposes and may not have been prepared for or be suitable for legal, engineering, or surveying purposes. It does not represent an on-the-ground survey and represents only the approximate relative location of geographic features.

