

## 03 - INVENTORY & ANALYSIS

“Sports build good habits, confidence, and discipline. They make players into community leaders and teach them how to strive for a goal, handle mistakes, and cherish growth opportunities.”

- Julie Foudy

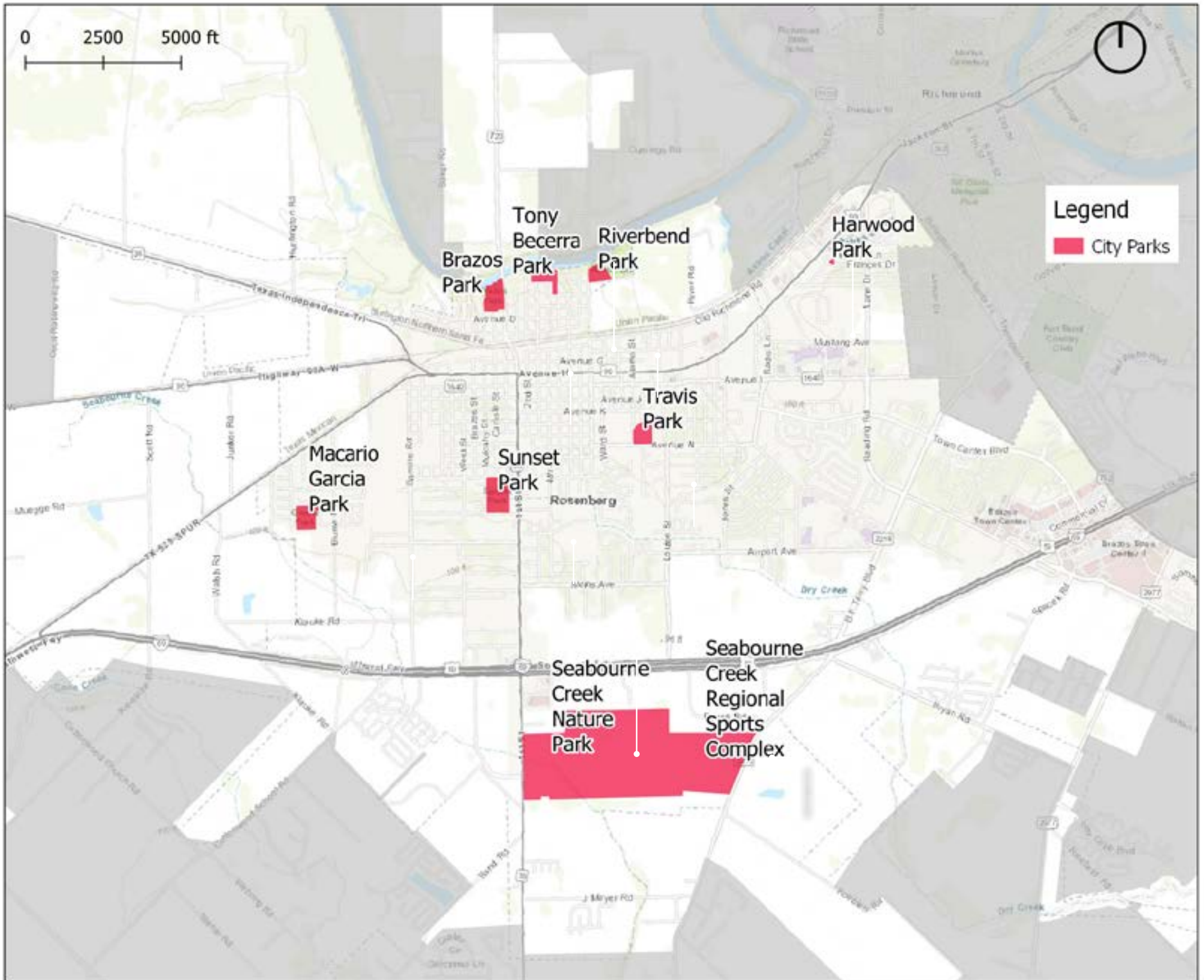


INVENTORY & ANALYSIS  
**Park Inventory**

**Park Inventory Overview**

The City of Rosenberg currently has nine city parks. According to NPRA 's (National Recreation and Park Association) park classification standards, the City currently has one mini park, six neighborhood parks, two regional parks, and does not have a community park (minimum 20 acres). The City has already planned to designate an approximate 20-acre park property in a near a large detention facility on the south east side of the city.

Park	Address	Size (acres)	Park Amenities																									
			Trail/ board walk (mile)	Concessions	Baseball Field	Softball Field	Soccer Field	Football Field	Sand Volleyball	Disc Golf	Batting Cage	Picnic Shelters	Tennis Court	Basketball Court	Restroom	Playground	Bench with Shade	Swing Set	Jungle Gym	Pavilions	Civic Center	Butterfly Garden	Fishing Pier	Observation Deck	Prairie Demo Garden	Wetlands Demo Garden	Native Prairie Restoration	
Brazos Park	320 Houston Street	10.3	0.23						1	1			1	1	1	1				1		1						
Harwood Park	1005 Frances Drive	0.31													1	1												
Macario Garcia Park	716 Blume Road	11.97	0.64			1	4						3		2	1	1		1		1							
Riverbend Park	2601 Avenue A	33.1				1							2			1												
Seabourne Creek Nature Park	3831 Highway 36 South	208.9	4.55							1			4			1					1	1	1	2	3	1	1	1
Seabourne Creek Regional Sports Complex	3701 Fountains Drive	168		1	4	1	2	2			4	1			1	1		1		1								
Sunset Park	2017 Mulcahy Street	17.67	0.64			2	1			1		2	3	2	1	1	1		1	1								
Tony Becerra Park	2000 Avenue A	10.55										3		1	1	2		1		1								
Travis Park	3004 Avenue N	8.82	0.38	1	1	1	3					3		2	1	1		2	1									
		<b>469.62</b>	<b>6.44</b>	<b>2</b>	<b>8</b>	<b>4</b>	<b>9</b>	<b>2</b>	<b>2</b>	<b>2</b>	<b>6</b>	<b>20</b>	<b>3</b>	<b>7</b>	<b>8</b>	<b>8</b>	<b>1</b>	<b>6</b>	<b>2</b>	<b>5</b>	<b>1</b>	<b>2</b>	<b>2</b>	<b>3</b>	<b>1</b>	<b>1</b>	<b>1</b>	



## Brazos Park

Address:  
320 Houston Street,  
Rosenberg, TX 77471

Brazos park is a 10.3-acre park located on the south bank of Brazos River, and is the gateway of Rosenberg entering from the north on the FM 723. Brazos park offers a scenic view of the Brazos River, open space, and beautiful shade trees that complement the selection of amenities. The park includes a 0.23 mile pathway and a variety of passive and active recreation features. Located off of Houston Street, Brazos Park is often seen as a gateway into Rosenberg.

### Amenities

- Trail
- Basketball court
- Restroom
- Playground
- Sand volleyball
- Disc golf
- Shaded picnic area
- Tennis court
- Pavilion
- Butterfly garden
- Picnic tables
- Parking





 Park Boundary



## Tony Becerra Park

Address:  
2000 Avenue A,  
Rosenberg, TX 77471

Tony Becerra Park is a 10.55 acre park located north of A.W. Jackson Elementary School, equipped with shaded playground, covered basketball court, restrooms, soccer practice field, and a shaded picnic area. The park was renamed in honor of local WWII veteran, Tony Becerra, who is a community leader, business man and former city council member. This park was built with a Local Parks Grant from the Texas Parks and Wildlife Department.

This park has is prone to flooding during major rain events, with a majority of the park in the regulatory floodway or the 100-year floodplain. Flooding has presented challenges with keeping the playground mulch fall surface from washing away.

### Amenities

- Canoe/Kayak Launch
- Shaded picnic areas
- Covered basketball court
- Restroom
- Shaded playground
- Playground
- Swing set
- Soccer goals
- Parking lot





## River Bend Park

Address:  
2601 Avenue A,  
Rosenberg, TX 77471

River Bend Park is a 33.1-acre passive park situated on the south bank of the Brazos River. The park is situated three blocks east of Tony Becerra Park and adjacent to the City Utilities Department. This park includes a baseball field, picnic shelters and a restroom. The structures and equipment in this park are dated, and due for replacement. The baseball field is underutilized at this park, and the baseball program will move to the Seabourne Creek Sports Complex in the future, opening up the park for redevelopment for other activities.

### Amenities

- Shaded picnic structure
- Bleacher
- Baseball field
- Restroom
- Parking lot





## Harwood Park

Address:  
1005 Frances Drive,  
Rosenberg, TX 77471

Harwood park is a 0.3 acre mini park locate at the corner of Timber Ln. and Frances Dr. This mini park is popular for families from the adjacent neighborhood. It is also the only park in current park zone 6. This park has shaded seating and playground.

The amenities in Harwood Park are in new condition and are well maintained. Parking is limited to on-street parking on Timber Lane. Installing a culvert and covering the ditch along Timber Lane would improve parking opportunities.

### Amenities

- Picnic shelter
- Shaded playground
- Pergola with bench
- Water fountain





## Macario Garcia Park

Address:  
716 Blume Road,  
Rosenberg, TX 77471

Macario Garcia Park is located in the west part of town with 12 acres of park land and amenities. This park is named in memorial of a local Congressional Medal of Honor and Purple Heart recipient Macario Garcia. Both youth and adult soccer leagues currently play at Macario Garcia Park. An additional soccer field in this park has recently been added. A pedestrian entrance on the east side provides access from the adjacent neighborhood. The 0.6 mile trail circled around the fields is a popular feature.

Adequate parking space is the largest challenge in this park due to the increased soccer activity. People use overflow parking on the grass near the field. The existing softball field will need some upgrades to facilitate future girl's softball growth. Some lighting around the soccer fields could extend the use of the fields later into the evenings.

### Amenities

- Basketball courts
- Restroom
- Playground
- Swing set
- Softball field
- Soccer fields
- Shaded picnic area
- Parking lot





## Sunset Park

Address:  
2017 Mulcahy Street  
Rosenberg, TX 77471

Sunset Park is a 17.67-acre park located in the central part of Rosenberg. A feature rich park, Sunset Park is one of the most popular in Rosenberg, with the highest number of pavilion rental requests for birthdays and other events. This park offers a variety of amenities including three diamond fields, two tennis courts, one basketball court, one sand volleyball court, two picnic pavilions and playgrounds. An additional picnic pavilion is planned to be installed adjacent to the existing two pavilions. Mature Live Oaks provide natural shade along with benches making for a peaceful seating area. An approximate 0.64 mile trail provides connections throughout the park.

With the Little League program being played at the Seabourne Creek Sports Complex, the existing diamond fields may be converted to soccer fields to meet growing demand.

### Amenities

- Baseball fields
- Softball field
- Sand volleyball
- Batting cages
- Shaded picnic area
- Picnic pavilions
- Tennis courts
- Basketball court
- Restroom
- Playground
- Swing set
- Jungle gym
- Benches
- Parking lot





## Travis Park

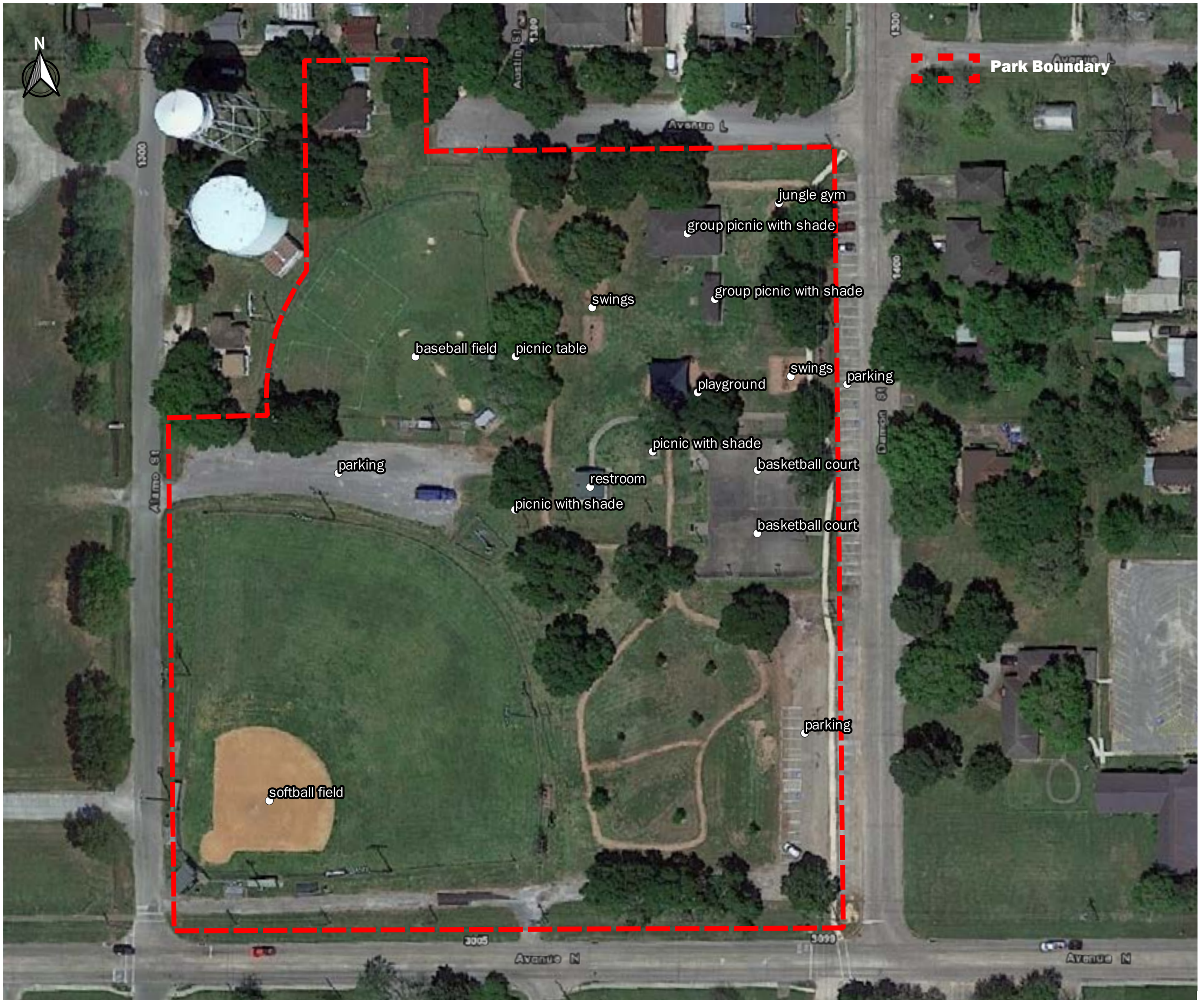
Address:  
3004 Avenue N,  
Rosenberg, TX 77471

Travis park is another popular park tucked away in the neighborhood across the street from Taylor Ray Elementary School. This park is 8.82 acres in size with 0.38 miles of natural trails and a host of amenities. The softball field is currently used for adult softball games. The small baseball practice field has been utilized by Rosenberg soccer league for younger players. Two picnic pavilions and a covered playground provide safe space for elementary school children to play. Some of the most popular amenities are the basketball courts.

### Amenities

- Baseball field
- Softball field
- Shades picnic area
- Picnic pavilions
- Covered Playground
- Swing sets
- Jungle gym
- Basketball courts
- Restroom
- Benches
- Water fountains
- Trails
- Parking lot





## Seabourne Creek Nature Park

Address:  
3831 Highway 36 South  
Rosenberg, TX 77471

Seabourne Creek Nature Park is the largest park in Rosenberg with 208.9 acres of park land, and is on the Great Texas Coastal Birding Trail with over 212 species sited to date. The park is passive in nature, comprised of open space, trails, a disc golf course, demonstration gardens, a 4-acre lake, a 6-acre wetland, 20 acres of natural prairie, picnic shelters and a pavilion. Community events such as the Family 4th Independence Day Celebration are hosted here, drawing thousands of residents and visitors.

The park is protected in part by a grant project from the Texas Parks and Wildlife Department and serves three primary roles: 1. Relaxation and Enjoyment, 2. Education, and 3. Birding and Wildlife Viewing.

### Amenities

- Lake and wetlands
- Picnic sites
- Pavilion
- Trails
- Disc golf course
- Open space
- Restrooms
- Parking Lot
- Fishing piers
- Demonstration gardens





## Seabourne Creek Regional Sports Complex

Address:  
3701 Fountains Drive,  
Rosenberg, TX 77471

The Seabourne Creek Regional Sports Complex is approximately 168 acres in size, and is currently home to Rosenberg National Little League and Rosenberg Roughnecks football league. A master plan was developed and adopted in 2008 for both the nature park and the sports complex. With the initial phases completed including the development of five baseball and softball fields, three multi-purpose fields for football and soccer, and associated amenities including restrooms, concessions, a playground, picnic shelter, and batting cages. The master plan concept includes a total of eight 220' diamond fields, two 330' fields, and eight 160'x360' football/soccer fields. Some adjustments to the master plan implementation must be made to accommodate a planned regional stormwater detention facility that will utilize some areas of Seabourne Creek park.

### Amenities

- Baseball fields
- Softball field
- Football/soccer fields
- Shaded play structure
- Batting cages
- Shaded picnic area
- Restrooms
- Concession stand





--- Park Boundary

# Park Level of Service Analysis

## National Standards

To evaluate the park level of service, standards from the National Recreation and Park Association (NRPA) and Trust For Public Land (TFPL) are used for comparison. A comparison of the number of parks and amount of developed park land with other communities in Texas is valuable in gauging the City’s park level of service.

The next step is comparing the more detailed number of specific recreation amenities and facilities with the national standards. Although these standards have been widely used, they should be regarded as benchmarks, and communities should set goals based on their local needs and demand.

The national average number of residents per park is 1,881 residents per park, with an average of 9.6 acres of parkland shared by 1,000 residents according to the 2018 NRPA Annual Report. Currently, Rosenberg provides 10.73 acres of developed park land per 1,000 residents. The NRPA generally recommends maintaining between 6.5 and 10.25 acres per 1,000 residents, so current level of service in Rosenberg is within range for developed park land. The City should strive to maintain this level of service as growth continues, and tools such as the park land dedication ordinance are important for meeting this goal.

	Residents per park	Park Acreage per 1,000 residents	Population	Number of parks
National Median	1,881	9.6		
<b>Rosenberg, Texas</b>	<b>4,862</b>	<b>10.73</b>	<b>43,754</b>	<b>9</b>
Texas City, TX	1,214	46.0	48,558	40
Rockwall, TX	1,340	11.6	44,208	33
Hunstville, TX	1,586	24.7	41,227	26
Cedar Park, TX	1,611	13.5	75,704	47
Georgetown, TX	1,767	32.1	70,685	40
Fluggerville, TX	1,920	16.7	63,359	33
Missouri City, TX	1,960	30.5	74,497	38
Roundrock, TX	3,083	3.2	114,071	37
Friendswood, TX	3,984	29.4	39,839	10
Rosenberg, Texas	4,862	10.7	43,754	9
Leander, TX	7,750	0.5	62,000	8

\*National median of municipalities with population 20,000 to 49,999

Source: National Recreation and Park Association 2018 NRPA Annual Report

The Trust for Public Land, a non-profit advocate for parks, uses a different approach in measuring park land, by calculating the ratio of park land acreage to city limits acreage. This measurement could provide some insight for municipalities on city-wide land use planning. Rosenberg has 469.62 acres of park land, representing 2% percent of the size of the city. Compared with other cities in Texas, Rosenberg is currently ranking at the lower end of the list.

Among the twelve comparable cities, three cities met or exceeded the national median for low density cities. To reach the national median, Rosenberg needs to add another 1,493 acres of park land, which could be considered as a goal in the future development. Meanwhile, working with private developers on providing publicly accessible park land will be a primary tool for growth of the parks system in the future.

	Parkland as percent of city area	Parkland Acreage	City Limits Acreage
National Median for low density cities	8.20%		
Rockwall	0.7%	997	144,464
Texas City, TX	0.9%	1011.24	118,784
Georgetown, TX	3.9%	1360.21	34,752
Sugar Land, TX	8.2%	2,233.9	27,405
Leander, TX	2.2%	513.84	23,709
<b>Rosenberg, TX</b>	<b>2.0%</b>	<b>469.62</b>	<b>23,576</b>
Huntsville	4.4%	1018.88	23,232
Roundrock, TX	9.9%	2270	22,976
Missouri City, TX	5.5%	1060.6	19,450
Cedar Park, TX	6.5%	927	14,330
Friendswood, TX	2.7%	365	13,376
Fluggerville, TX	16.2%	1171.3	7,232
Fulshear, TX	0.4%	28.24	7,065

Source: TFPL City park facts 2019-Acreage and Park System Data

	<b>Facilities</b>	<b>National Median number of Residents per Facilities</b>	<b>Number of Residents per Facilities in Rosenberg</b>	<b>Number of Current City Owned Facilities In Rosenberg</b>	<b>Number of total facilities needed in Rosenberg based on national median</b>
Outdoor	Playground	3,397	5,469	8	13
	Basketball courts	7,260	6,251	7	6
	Tennis courts (outdoor only)	5,217	14,585	3	8
	Diamond fields: baseball - youth	5,574	5,469	8	8
	Diamond fields: softball fields - youth	8,216	14,585	3	5
	Diamond fields: softball fields - adult	9,494	43,754	1	5
	Diamond fields: baseball - adult	16,360	n/a	2	2
	Rectangular fields: soccer field - youth	5,262	8,751	5	8
	Rectangular fields: football field	20,398	21,877	2	2
	Rectangular fields: soccer field - adult	9,930	43,754	4	0
	Multi-purpose synthetic field	33,441	n/a	0	1
	Community Gardens	27,167	43,754	1	2
	Skate park	41,148	n/a	0	1
	Swimming pools (outdoor only)	26,474	n/a	0	2
Indoor	Community Centers	23,713	43,754	1	2
	Recreation centers (including gyms and fitness centers)	27,776	n/a	0	2
	Senior centers	39,986	n/a	0	1
	Performance amphitheater	45,339	n/a	0	1
	Nature centers	100,690	n/a	0	0

(500-1500 residents/Square Mile)

Source: National Recreation and Park Association 2018 NRPA Annual Report

National Recreation and Parks Association also provide level of standards for recreation amenities and facilities that consider the median number of residents per facility. Comparing Rosenberg’s existing facilities with the national standards, basketball courts, youth baseball courts and football fields meet or exceed the standards.

The City’s supply of all other recreation facilities evaluated are either lower than the NRPA standards or missing. It should be noted that the NRPA recommends these standards only as a benchmark and suggests that the local demand should be the major driving factor for level of service. For example, the result of the comparison shows another five tennis courts need to be added. In fact, the school district has opened tennis courts to the public after school hours, which is currently meeting the local demand. Athletic fields are popular both for both youth and adults in many cities, the City of Rosenberg had future plans for more athletic fields. Seabourne Creek Regional Sports Complex is partially completed with planned additional facilities based on the master plan vision.

Rosenberg’s indoor recreation facility is the Civic Center located adjacent to Seabourne Creek Nature Park, which provides meeting and events space but not the recreation amenities associated with a traditional recreation center, although it should be noted that, while it may not have certain exercise facilities, the Center is home to a number of recreation programs offered by the City. The T.W. Davis Family YMCA is currently the primary indoor recreation provider, however, it has constraints such as limited amenities and a location outside the City Limits. An indoor recreation center needs to be considered in the future along with growing needs in Rosenberg. The seniors in Rosenberg are currently served by the county through the Bud O’Shieles Community Center and the YMCA.

# 10-Minute Walk Analysis

## A Park Within a 10-Minute Walk of Home

The 10-minute walk campaign was organized by Trust for Public Land, Urban Land Institute, and National Recreation and Park Association. The campaign’s mission is to build “a nationwide movement to improve access to parks & green spaces, while transforming communities, and getting people to the places where they live some of their best moments.” The goal of the movement is to “ensure there’s a park within a 10-minute walk of every person, in every neighborhood, in every City across America”.

To understand how Rosenberg currently measures against the “10-Minute Walk” test, an analysis was conducted using Geographic Information Systems (GIS) software utilizing the NRPA methods to generate a 10-minute walk radius from each city park’s access points based on the existing road network. Rather than using a simple circular radius, the analysis considers only the practical means of walking to a given park along existing roads. This provides a more meaningful illustration of where service gaps exist in the pedestrian network.

The 10-minute walk area is directly associated with the number and location of parks, pedestrian access to the parks, and the walking network. An analysis shown on the adjacent page illustrates the effect of location on service area. For example, Seabourne Creek Nature Park is more than 200 acres in size, but covers a 10-minute walk service area that is smaller than the coverage of Harwood Park due to the adjacent two major arterial as barriers and limited nearby residential development. Although Harwood park is a 0.3-acre mini park, it is located conveniently in the center of residential and commercial area, connecting the neighborhood with low-traffic neighborhood roads, and accessible from both adjacent streets.

The Trust For Public Land has an interactive website (<https://www.tpl.org/>) with the 10-minute walk facts of many American cities. The NRPA’S analysis is based on 2018 demographic data, reporting that Rosenberg has 30.5% of the population (11,775) living within a 10-minute walk to a park, compared with the national average 54% in 2018. The interactive website also breaks down the population that lives within the 10-minute walk area by age, income and race. The analysis also prioritizes the areas that need parks based on population density (50%), density of children age 19 and younger (25%), and density of households with income less than 75% of the regional median household income. Rosenberg ranks at a lower place in comparison of cities in Texas with population between 35,000-40,000 in 2018.



Source: ParkServe (<https://www.tpl.org/city>)


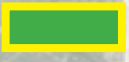
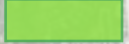
Using the same methodology as the NRPA, with updated population estimates in 2019 from Esri, the percentage of population living within the 10-minute walk to park area is decreased to **23%** due to a larger estimated population of **43,754** residents in 2019.

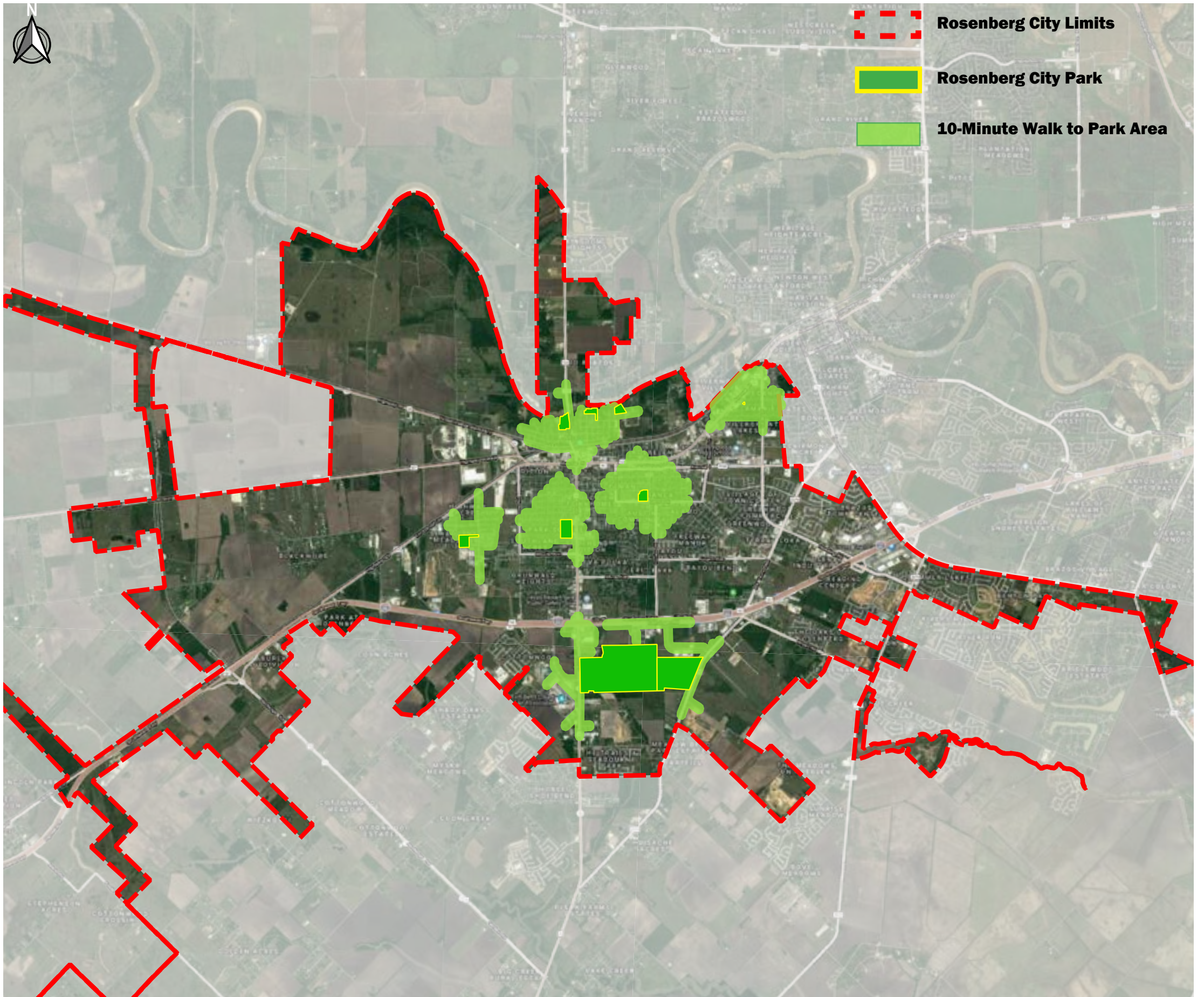
The light green shaded areas on the map on the adjacent page represent areas within the City that are within a 10-minute walk of a park. The gap areas are mostly in Park Zone 6 and Zone 8 and some neighborhoods in central area, although it should be noted that the map and analysis do not take into account private parks that could potentially help meet recreational needs within a 10-minute walk. This changing result is not only due to the growing number of the population but also where the growth happened. This results provide guidance as to where future parks are needed in the community.

City Name	Population	Population in 10-minute walk to park area
National Average		54%
<b>Rosenberg, TX</b>	<b>43,754</b>	<b>23.0%</b>
Cedar Park, TX	66,472	79.0%
Deer Park, TX	35,012	71.2%
Texas City, TX	54,651	58.8%
La Porte, TX	35,331	55.3%
Leander, TX	42,601	53.8%
Georgetown, TX	62,420	52.7%
Missouri City, TX	84,600	45.9%
Baytown, TX	40,789	45.7%
San Marcos, TX	55,039	43.0%
Katy, TX	17,125	39.5%
Sugar Land, TX	91,930	37.8%
Alvin, TX	27,983	31.8%
Richmond, TX	12,484	2.3%

Source: ParkServe (<https://www.tpl.org/city>)



-  **Rosenberg City Limits**
-  **Rosenberg City Park**
-  **10-Minute Walk to Park Area**



## Commit to a 10-Minute Walk Campaign

The City of Rosenberg may choose to take on the challenge of becoming a 10-minute walk community by establishing an attainable goal and identifying specific actions for meeting the goal. The following are some key benefits of participating in the 10-Minute Walk Campaign as well as an outline of the key steps for implementation.

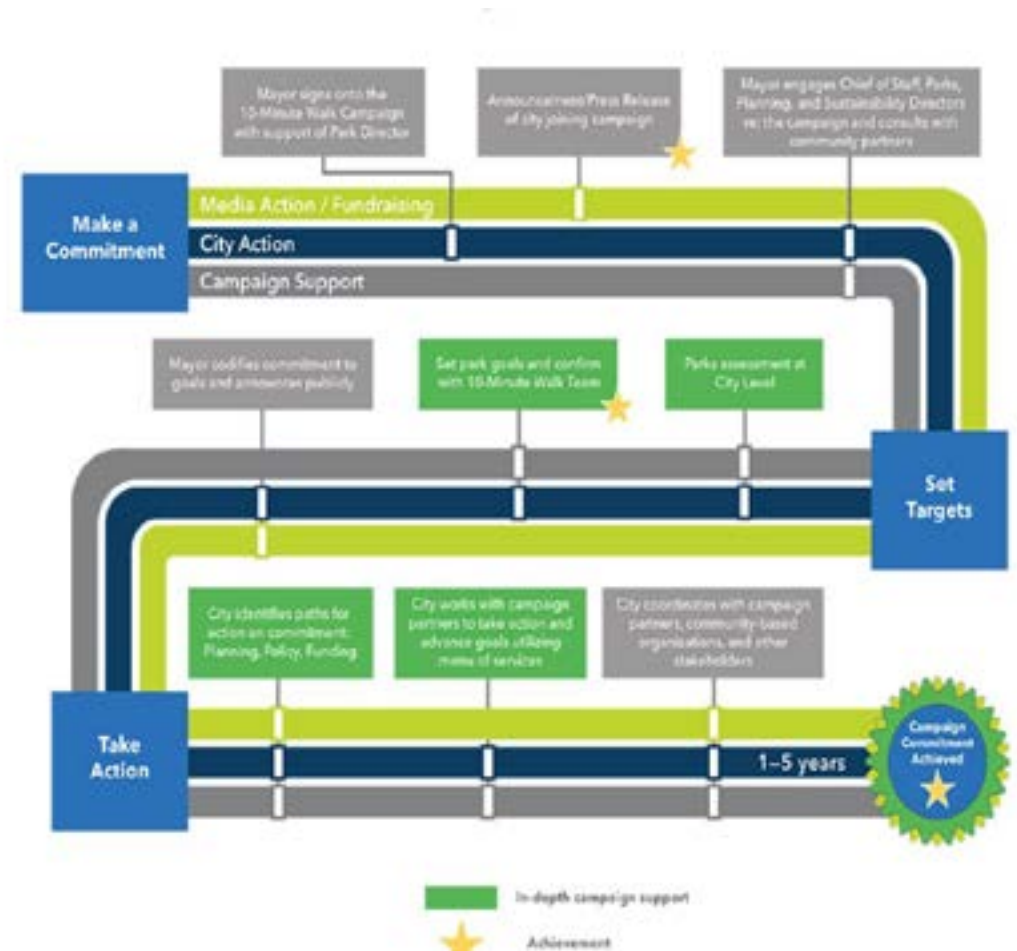
Benefits:

- 10-Minute Walk Planning Grant
- Ongoing technical assistance from NRPA, TPL, ULI, and additional national and local experts to support local planning efforts
- Access and technical support for planning and mapping tools such as NRPA's Park Metrics, TPL's ParkServe® and Parkology
- Peer-to-peer support and networking opportunities to share lessons learned and address challenges
- National visibility through: articles in Parks and Recreation magazine, Open Space Blog, partner publications, and national press releases
- Opportunities to present at national conferences, including the NRPA Annual Conference

What to do:

- Select an attainable 10-Minute Walk Goal and specific action.
- Develop a measurement strategy that outlines what success looks like and how you'll track your progress.
- Select a realistic date within the next 5 years for completing your commitment.
- The mayor of the city will need to sign a commitment for the campaign and commit to reach the goal of the 10-Minute Walk.

The 10-minute walk campaign started in 2017 and has selected two groups of grantees in 2018 and 2019. The grantees do not necessarily have the highest accessibility, but have made a statement and effort to set a goal to become a city that has a more equitable park system. From the comparison, Rosenberg has a higher percentage of population in 10-minute walk to park area than some grantees, which give Rosenberg an advantage to start.



10-Minute Walk Campaign Process

Source: <https://www.nrpa.org/our-work/partnerships/initiatives/10-minute-walk>

## Recreation by Others

NRPA 10-Minute Walk Grantees	Population	Population in 10-minute walk to park area	Years Granted
<b>Rosenberg, TX</b>	<b>43,754</b> (2019 Estimate)	<b>23%</b>	
Winooski, VT	7,782	82%	2019
Bennettsville, SC	8,572	28%	2019
Lynnwood, WA	37,188	76%	2019
West Athens- Westmont	41,000	26%	2019
Paterson, NJ	152,239	72%	2019
Tacoma, WA	210,000	69%	2019
Raleigh, NC	457,181	70%	2019
Memphis, TN	663,548	45%	2019
Denver, CO	699,748	94%	2019
Los Angeles City, CA	3,984,716	61%	2019
Austin, TX	856,000	54%	2018
Clarkston, GA	12,500	71%	2018
Tukwila, WA	20,000	80%	2018
Camden, NJ	77,000	94%	2018
New Rochelle, NY	78,000	91%	2018
Lewisville, TX	102,000	61%	2018
El Cajon, CA	102,000	45%	2018
Chattanooga, TN	175,000	36%	2018
Grand Rapids, MI	193,000	72%	2018
Rochester, NY	208,000	78%	2018
Orlando, FL	259,000	60%	2018
Anchorage, AK	300,000	74%	2018

*\*Data source: National Recreation And Park Association. All data dated to the last update in NRPA*

Rosenberg residents are not limited to recreation activities provided by the City. In fact, survey results and public event discussions indicate that residents are travelling to other cities for a variety of activities. Many residents have been using recreation facilities from other providers both public and private, and often traveling to other cities.

Using a 30-minute drive radius from the Rosenberg City Hall as a research radius, a total of 96 recreation facilities provided by entities other than the City of Rosenberg were identified. This includes school districts, homeowners associations, other municipalities and private vendors.

### The following facilities were identified:

- 17 baseball/softball complexes that have four or more fields, are located within the search area.
- 30 facilities provide at least 2 outdoor rectangular fields for soccer, football, etc.
- 4 locations have indoor soccer field.
- 24 facilities have indoor basketball and are convertible to volleyball.
- 13 aquatics facilities found in the search area, which is identified with a lap pool with play structure or play area. 10 out of 13 are owned by the cities and 3 are private facilities.
- 4 outdoor archery and 6 BMX/mountain bike track were also found in the search area.



Inventory of Recreation Facilities Provided by Homeowners Associations

HOA Park Name	Pool	Fitness Room	Cardio Room	Basketball Court	Sand Volleyball	Diamond Field	Pavilion/ Shade Structure	Playground	Swing set	Splash Pad	Soccer Field	Tennis
<b>Bonbrook Plantation Community Center</b>	1							1	1	1	2	
<b>Canyon Gate at the Brazos Recreation Center</b>	1							1				2
<b>Cottonwood HOA</b>	1						1	1				
<b>Del Webb Sweetgrass Homes</b>	2	1	1									
<b>River Run</b>	1											
<b>Rivers Mist</b>								1				
<b>Summer Lakes</b>	1							1		1		
<b>Sunrise Meadow</b>				1			1	1				
<b>Sunrise Meadow 2</b>								1				
<b>The Oaks of Rosenberg</b>	1							1				
<b>The Reserve At Brazos Town Center</b>	1							1	1			
<b>Villages of Town Center Pool</b>	1				1			1	1			
<b>Walnut Creek</b>	1							1	1			
<b>Westin Homes StoneCreek HOA Park</b>	1							1		1		

